

IMDS USER GUIDE

1. Go to <https://www.mdssystem.com/imdsnt/faces/login?language=en>
2. Log in – User ID = gadgc004
Password = FOREST12
3. Click MDS > New > Datasheet > Component. (Fig1)

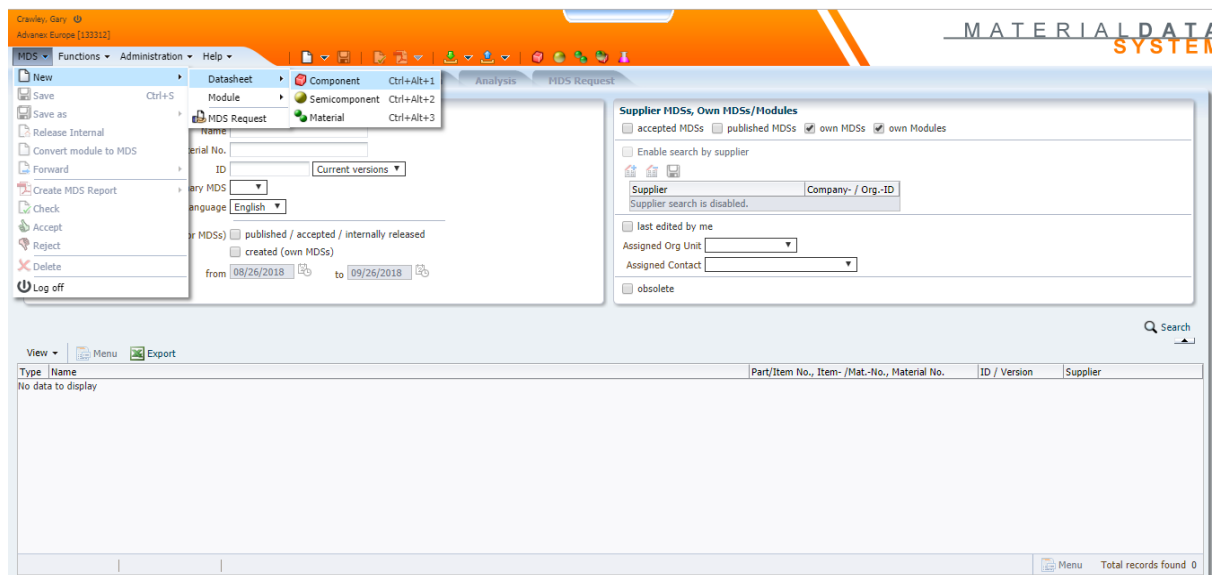


Fig.1

4. Complete required fields:
 1. Description (from drawing)
 2. Part/Item No. (from drawing)
 3. Measured weight per item (from EFACS)

Note: Do not tick 'Preliminary MDS' box. (Fig2)

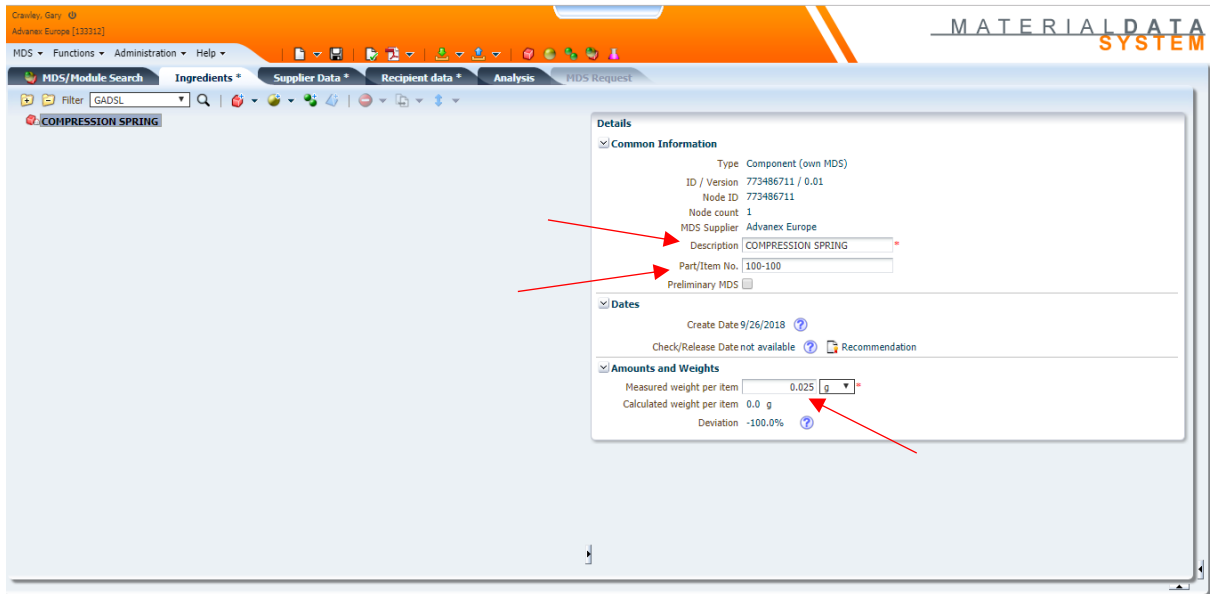


Fig.2

5. Right click name of component and select Add > Material. (Fig3)

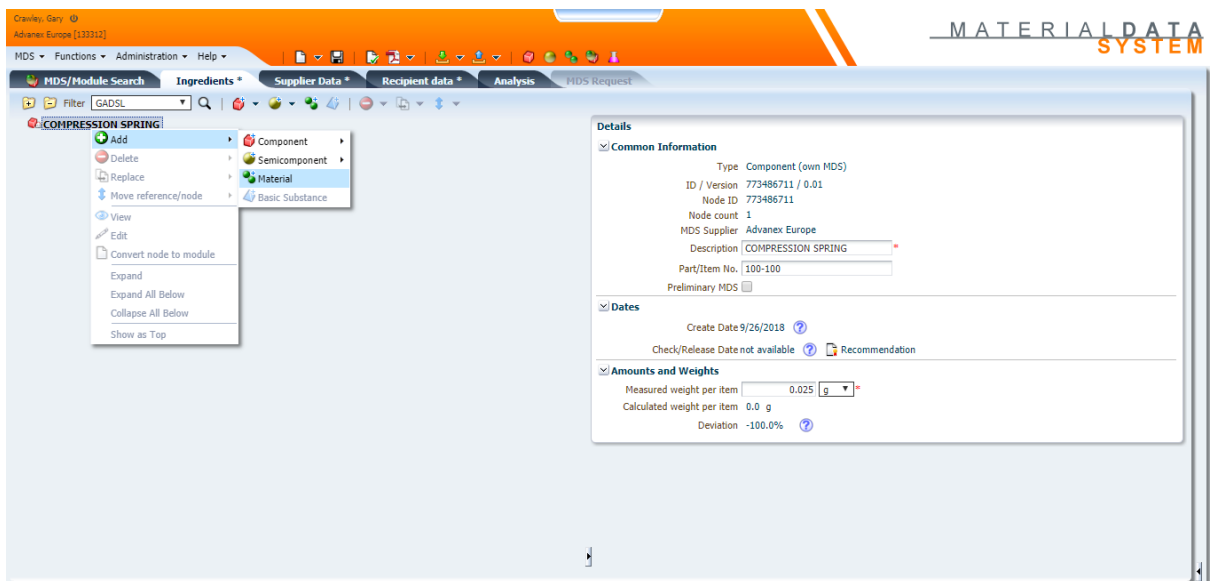


Fig.3

6. In the 'Norm, Symbol, Classification' section click the search icon for 'Norm'. (Fig4)

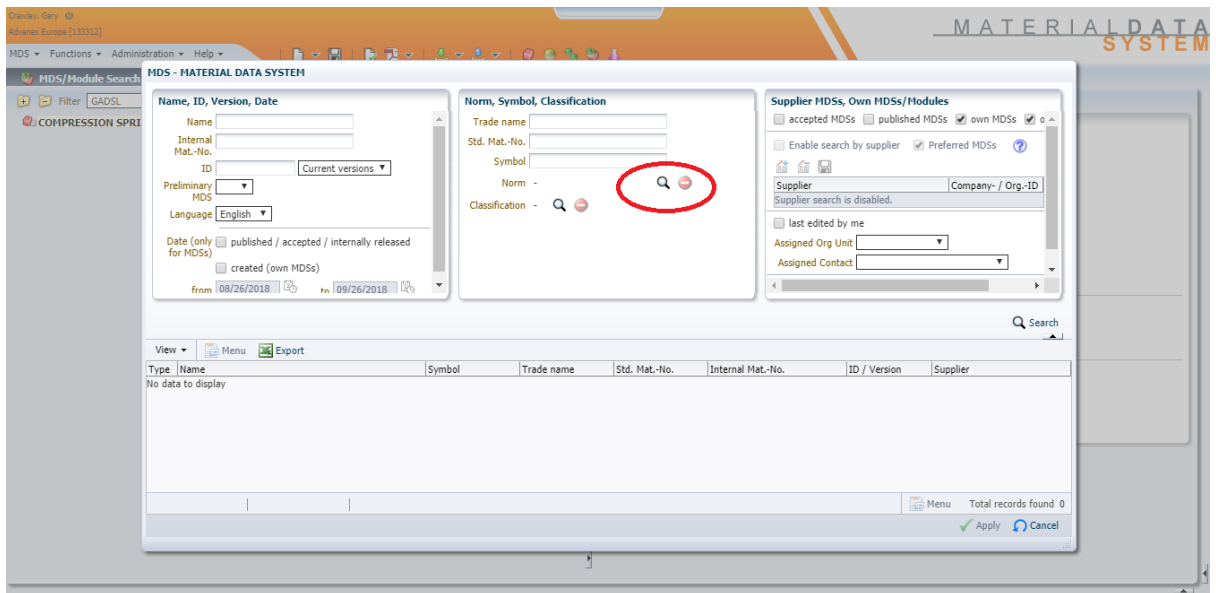


Fig.4

7. Complete required fields: - Company: select 'public norms'.

- Norm: select material classification (from material certificate relating to part).
- Norm Code: enter the material grade (from material certificate relating to part).

Note: Use an Asterisk (*) as a wildcard to help find the relevant material grade.

8. In the 'Supplier MDSs, Own MDSs/Modules' on the right-hand side tick 'accepted MDSs' and 'published MDSs' then click the 'Search' icon below.

9. Select the relevant material from the table and click 'Apply'. (Fig5)

Note: If the required material cannot be found an equivalent may need to be used.

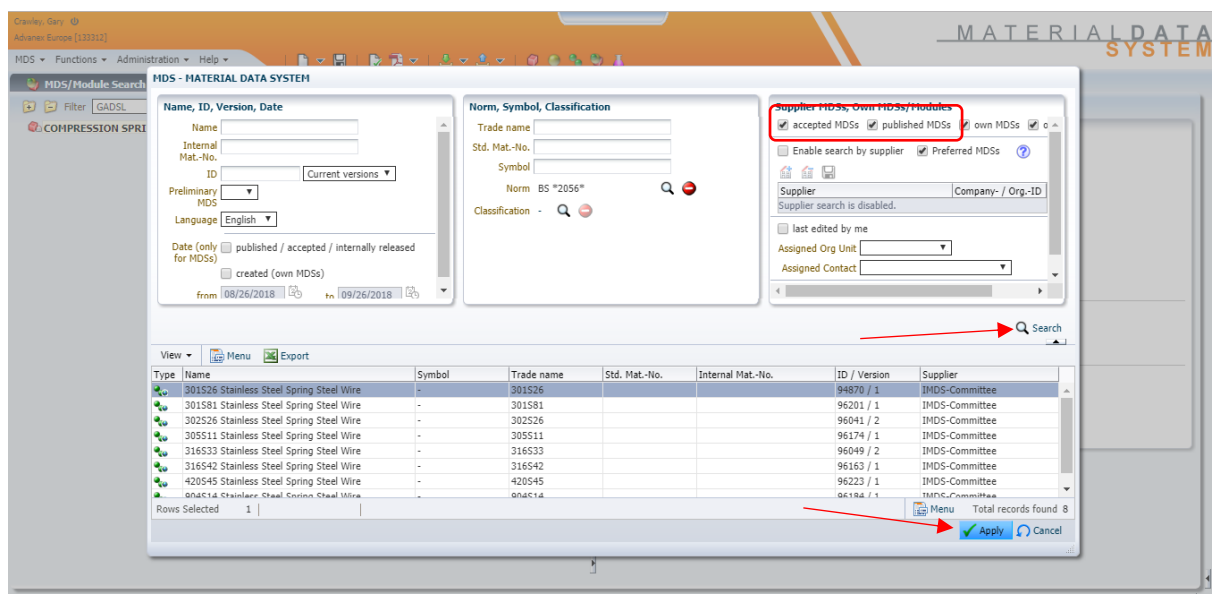


Fig.5

10. On the right-hand side enter the weight of the part again. (Fig6)

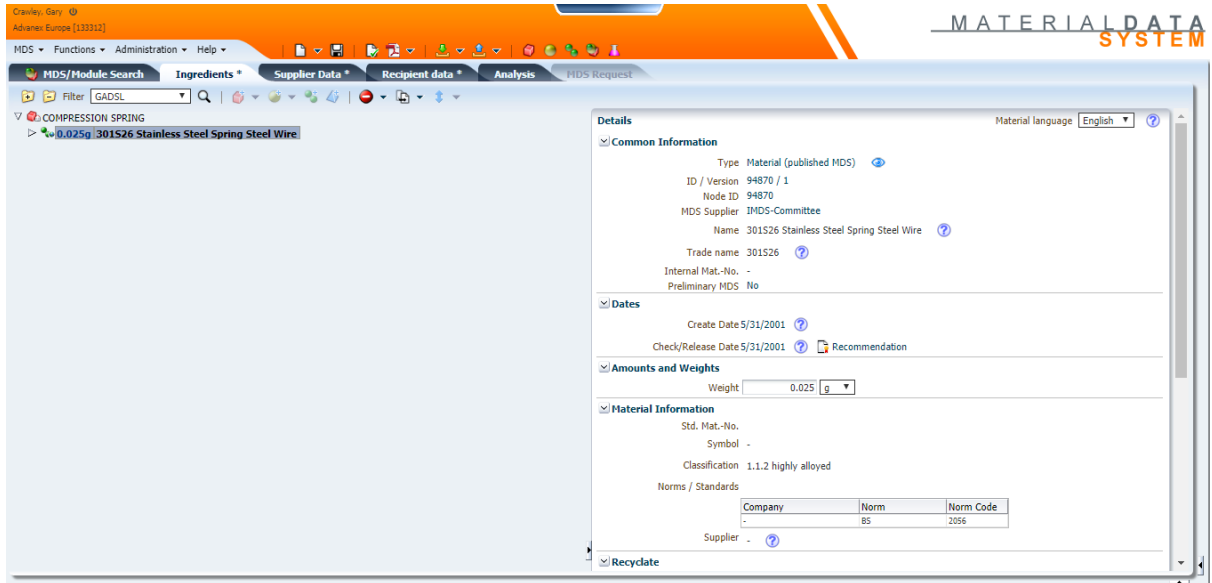


Fig.6

11. Click the 'Supplier Data' tab. Enter a contact person from the drop down. (Fig7)

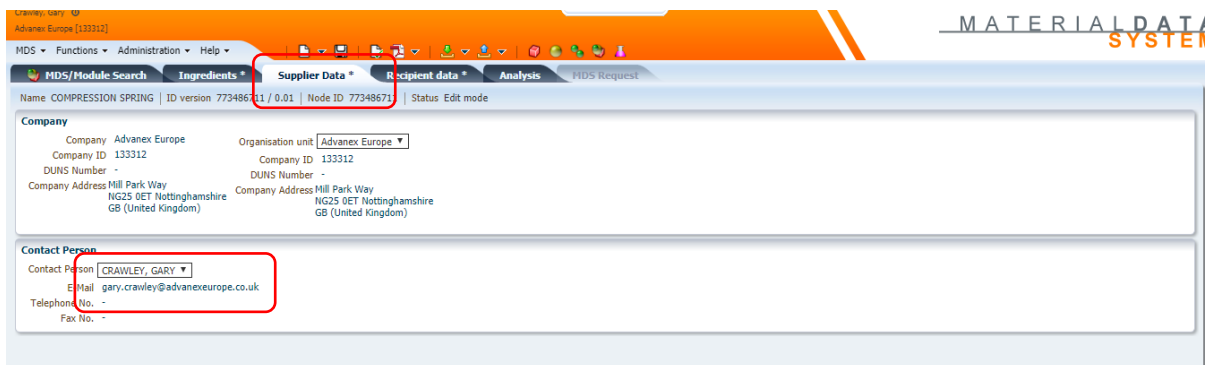


Fig.7

12. Click the 'Execute check' icon. This will show any outstanding actions required to finish MDS. (Fig8)

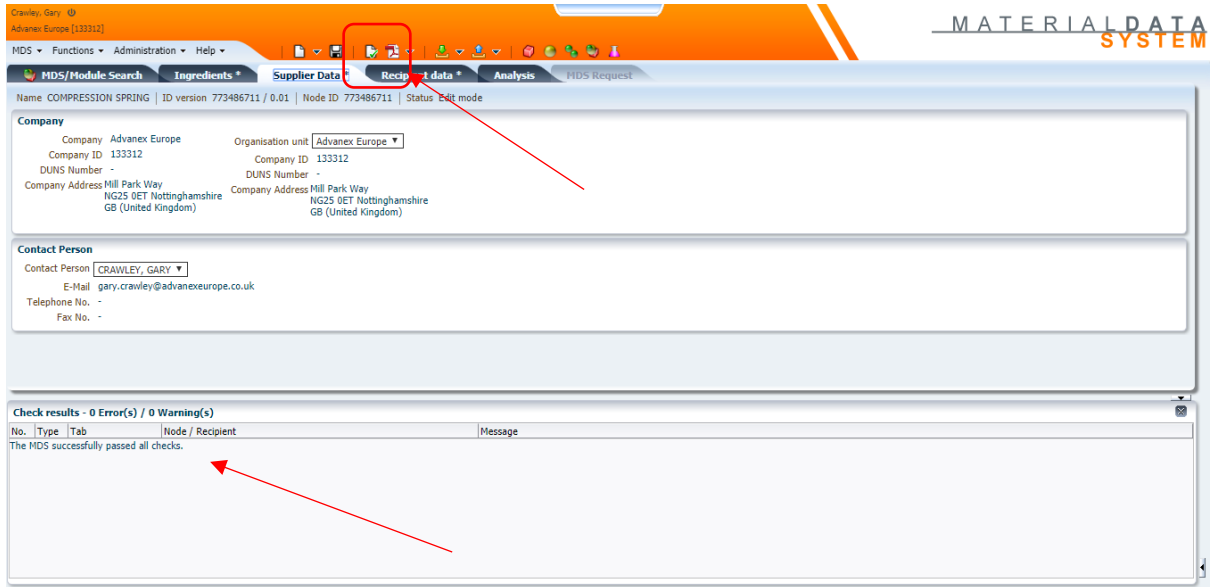


Fig.8

13. When the MDS has successfully passed all checks click the 'Recipient data' tab.

14. Click the 'Add recipient' icon.

15. Enter the customer's name in the 'Company Name' field and click the 'Search' icon below. (Fig9)

16. Select the relevant Company and click 'Apply'.

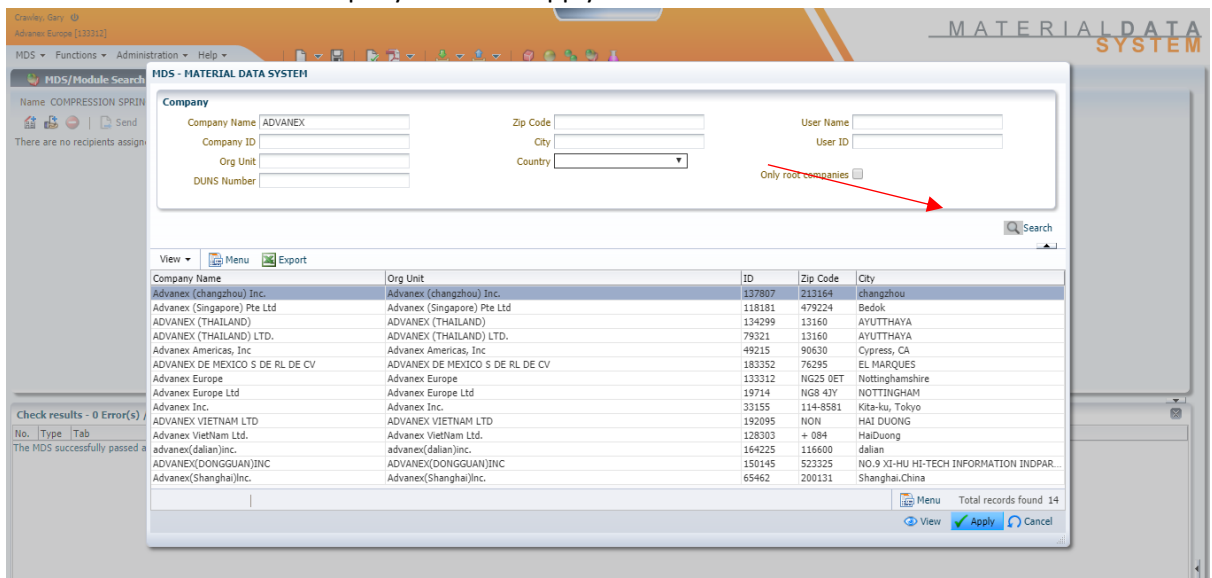


Fig.9

17. Enter the 'Part/Item No.' on the right-hand side then click 'Send'.

18. The status of the MDS will now show 'Handshake'. Once the customer has accepted the MDS the ID version will change from /0.01 to /1.

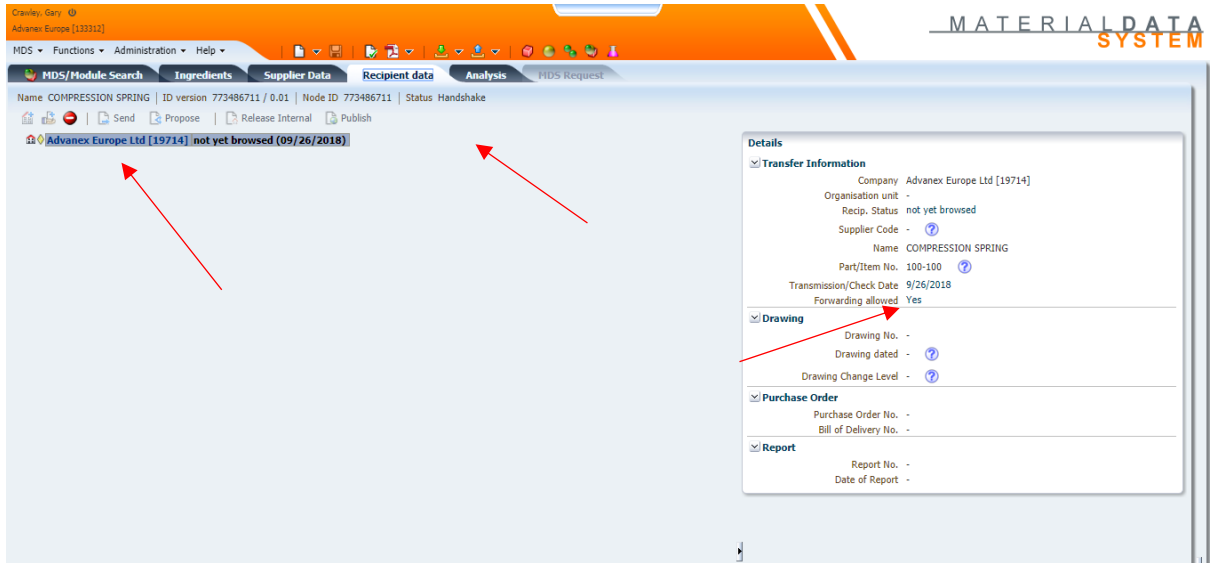


Fig.10